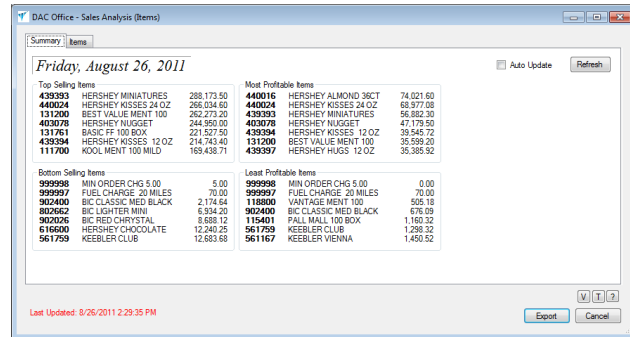


## Overview

The "Daily Sales – Item" analysis shows item sales data as it is being sold throughout the day. Quickly review the items generating the top and bottom sales and profit. Click on an item number in bold to see the Item Detail screen showing further analysis. Check the "Auto Update" button to automatically refresh the data every 30 seconds. Click the Refresh button to perform a manual refresh. Click on the items tab to view all items sold throughout the day. Sort any grid column by clicking on the column heading. Check the "Modify Settings" checkbox to restrict items or change what gets displayed in the grid.



Item#	Item	Unit	UM	Last Sold	Purchased	QtyOrd	QtyShp	Price
<b>131200</b>	BEST VALUE MENT 100 LT	2	CTN	8/26/2011	0.00	10,302.00	9,660.00	262,273.20
561161	KEEBLER PECAN SANDIES 2 OZ	2	BOX	8/26/2011	0.00	9,520.00	9,520.00	129,834.00
440016	HERSHEY ALMOND 36CT CHRISTMAS PKG	2	BOX	8/26/2011	0.00	7,565.00	7,565.00	164,801.60
930030	CAPTAIN BLACK GOLD POUCH	2	PK	8/26/2011	0.00	6,798.00	6,465.00	152,315.62
131761	BASIC FF 100 BOX	2	CTN	8/26/2011	0.00	6,500.00	6,000.00	221,527.50
902026	BIC RED CHRYSYAL	2	EA	8/26/2011	0.00	6,348.00	6,348.00	8,688.12
631127	KEEBLER FUDGE STRIPE COOKIES 11.5OZ	2	BAG	8/26/2011	0.00	6,232.00	6,232.00	94,749.30
616600	HERSHEY CHOCOLATE SYRUP BOTTLE 24OZ	2	EA	8/26/2011	0.00	6,177.00	6,177.00	12,240.25
561158	KEEBLER CHIPS DELUXE 2OZ	2	CTN	8/26/2011	0.00	6,129.00	6,129.00	21,910.25
439397	HERSHEY HUGS 12 OZ	2	BAG	8/26/2011	0.00	4,774.00	4,774.00	161,992.40
111700	KOOL MENT 100 MILD	2	CTN	8/26/2011	0.00	4,666.00	4,333.00	169,438.71
102815	LIGGETT SELECT ULTRA 100 BX	2	CTN	8/26/2011	0.00	4,464.00	3,970.00	100,334.65
902663	ZIPPO BLACK MATT	2	EA	8/26/2011	0.00	4,392.00	4,392.00	86,442.72

Last Updated: 8/26/2011 2:35:05 PM

## Filter and Customize Items

Restrict items by selecting values in the Category, Sales Class and/or Tax Class drop-down boxes. Further restrict items by selecting one or both of the two check boxes.

Check and uncheck columns to display in the grid. When changes are made, click the import button to refresh the data.

Click on the Export button to create a PDF file of the screen data.

